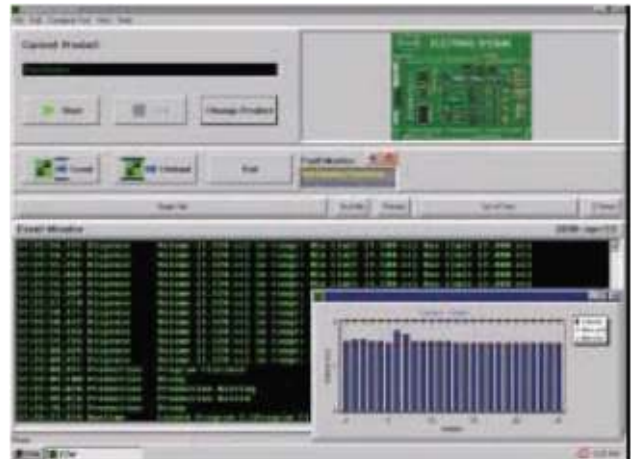


# Flow Monitoring System

For Improved Conformal Coating Yield and Traceability

## Features and Benefits

- Flow Monitoring occurs during production without affecting the cycle rate or increasing material usage
- Flow Monitoring confirms that the correct amount of material is dispensed with a resolution of  $\pm 0.05\text{cc}$
- The operator is alerted when an adjustment is required to prevent possible defective products
- Stainless steel construction ensures the Flow Monitor module is compatible with all conformal coating materials



Nordson ASYMTEK's Flow Monitoring system measures the volume of material dispensed against an established target. Within the program, measuring points are defined and target values and process limits established.

Flow Monitoring confirms that products have been coated with the correct amount of material with a resolution of  $\pm 0.05\text{cc}$ , and offers full flexibility of measuring – all at the discretion of the programmer. When a dispensed volume is outside the defined process limits, the system triggers an alarm condition, allowing the operator to make adjustments to prevent possible defective products.

Nordson ASYMTEK's EasyCoat® software logs the data to a log file and database. Process data can be exchanged with a customer-specific Factory Information System (FIS).

The Flow Monitoring option is designed for use with Nordson ASYMTEK's Select Coat® SL-940 conformal coating systems that are equipped with any of Nordson ASYMTEK's conformal coating applicators.

# Flow Monitoring System Specifications

Flow range:	50-4000ml/min. (0.013-1.06gpm)
Viscosity range:	2-2000cSt (2-2000cPs @ density = 1gr/cm <sup>3</sup> )
Accuracy:	±2% at 20cSt (20cPs @ density = 1gr/cm <sup>3</sup> )
Resolution:	0.04ml/pulse
Temperature range:	0-80°C (32-176°F)
Software:	Integrated into EasyCoat® software

## Material Compatibility Wetted Parts

Housing and gear:	Stainless steel
Seals:	Polytetrafluoroethylene (PTFE)

**For more information,  
speak with your local  
representative or  
contact your regional  
office.**

[Nordsonasymtek.com](http://Nordsonasymtek.com)

### North America

Headquarters  
Carlsbad, CA, USA  
+1.760.431.1919  
[info@nordsonasymtek.com](mailto:info@nordsonasymtek.com)

### China

email: [china@nordsonasymtek.com](mailto:china@nordsonasymtek.com)  
[china@nordsonasymtek.com](mailto:china@nordsonasymtek.com)

Shanghai  
+86.21.3866.9166

Beijing  
+86.10. 2453.8358

Guangzhou  
+86.20.8554.9996

### Europe

Vlaaricht, Netherlands  
+31. 43.352.4466  
[cs.europe@asymtek.com](mailto:cs.europe@asymtek.com)

### Japan

kyo  
+81.3.5752.2801  
[info\\_jp@nordsonasymtek.com](mailto:info_jp@nordsonasymtek.com)

### Korea

Seoul  
+82.31.755.8337  
[info@nordsonasymtek.com](mailto:info@nordsonasymtek.com)

### India

Chennai  
+91. 44.4553.9024  
[info@nordsonasymtek.com](mailto:info@nordsonasymtek.com)

### S.E. Asia/Australia

Singapore  
+65.3796.9514  
[info@nordsonasymtek.com](mailto:info@nordsonasymtek.com)

### Taiwan

+886.229.02.1860  
[info@nordsonasymtek.com](mailto:info@nordsonasymtek.com)

**Nordson ASYMTEK**

**+1.760.431.1919 Phone**

**[info@nordsonasymtek.com](mailto:info@nordsonasymtek.com) Email**

**2747 Loker Avenue West**

**Carlsbad, CA USA 92010-6603**

**[www.nordsonasymtek.com](http://www.nordsonasymtek.com)**

**Published 2016-12-01**

Page 2 of 2

