

We understand the needs of those in electronics packaging and assembly. As the original jet dispensing innovator, we offer high-quality dispensing systems, exceptional jetting technologies, and the most advanced closed-loop process controls in the industry. With more than three decades of experience delivering value and outstanding applications expertise, we are uniquely positioned to empower your process.

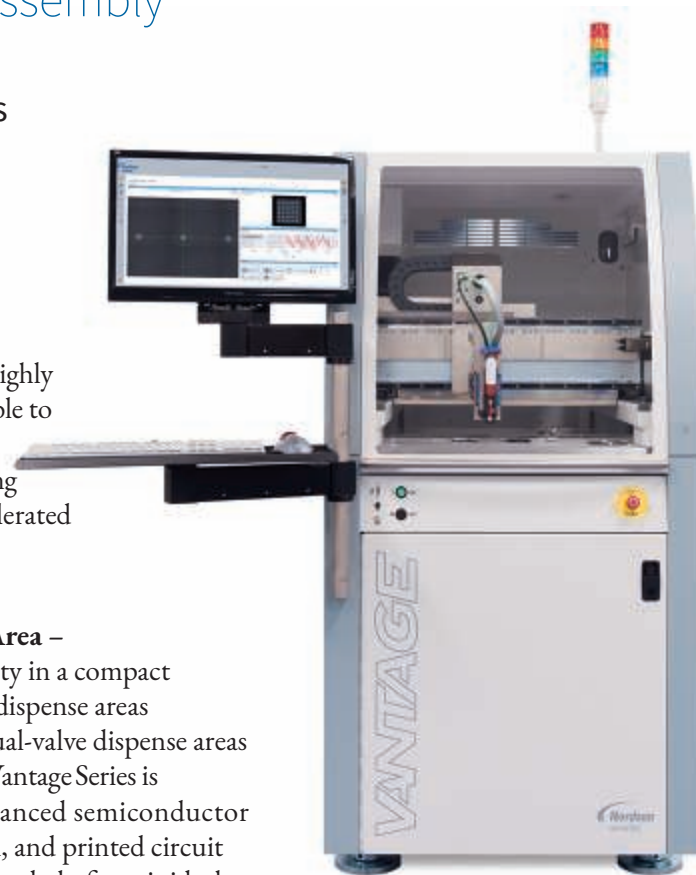
# ASYMTEK Vantage Series

## Advanced Dispensing for Precision Packaging and Assembly

### Features and Benefits

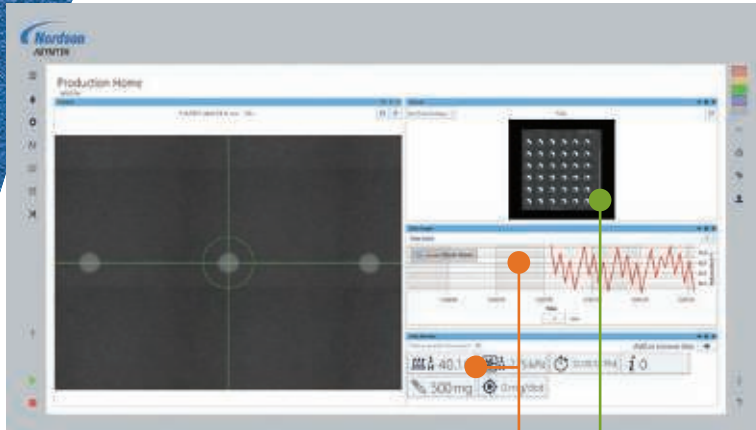
- **Remarkable Speed and Accuracy without Compromise** – The Vantage® Series increases productivity up to 2X when compared to current generation platforms. The highly stable design makes it possible to dispense with one or two ASYMTEK IntelliJet® Jetting Systems at significantly accelerated speeds without sacrificing dispense accuracy.
- **An Expanded Dispense Area** – Provides maximum flexibility in a compact footprint with single-valve dispense areas up to 470 x 475 mm and dual-valve dispense areas up to 346 x 475 mm. The Vantage Series is specifically designed for advanced semiconductor package, electromechanical, and printed circuit board assembly. This advanced platform is ideal for applications that involve high-speed or small-volume dispensing, tight keep out zones, or dispensing of thin and accurate lines.

Combined with the IntelliJet Jetting System with Readiset® Jet Cartridge, the Vantage Series delivers cutting-edge reliability and micro-dot jetting up to 1,000 Hz frequency.





# ASYMTEK CANVAS DISPENSING SOFTWARE



Graphing and Data Tiles

Canvas® Graphical Programming

A completely new software interface that simplifies your programming tasks and provides you with powerful insight and control over your process.

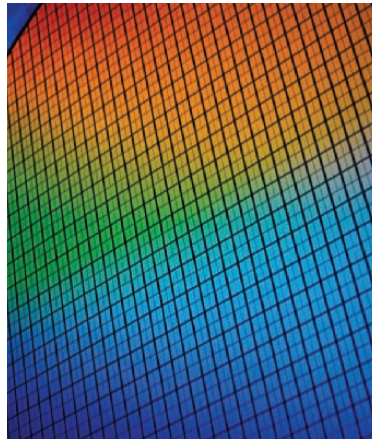
- **Graphical Programming** – lets you scan a workpiece, develop your program, and visualize the dispensing results on a virtual canvas prior to dispensing.
- **Guided Wizards** – provide easy step-by-step setup instructions.
- **Quick-Reference Graphing and Data Tiles** – allow you to control how system sensor and process data are displayed.

## Application Highlights

Built on a robust chassis designed to achieve high accuracy and speed, the Vantage Series delivers precise and reliable jetting up to 1,800,000 dots/hr.



Ultra-precise placement of  $<200\ \mu\text{m}$  fluid stream widths into narrow gaps



Accurate dispense line paths for volumes  $<1.5\ \text{nL}$  as required for advanced wafer-level technology node scaling



Higher throughput and accuracy with simultaneous dual-valve jetting and patented\* real-time correction for x, y, and z-axis substrate skew.

Additional application capabilities and specifications are available.

\*Nordson US Patents 9,707,584 and 10,150,131 and other patents pending.

**Nordson**  
ELECTRONICS SOLUTIONS

For more information, visit our website to find your local regional office or representative. We have several global locations to serve you.

North America  
Asia Pacific  
EMEA

[nordsonasymtek.com/global-locations](http://nordsonasymtek.com/global-locations)  
[info@nordsonasymtek.com](mailto:info@nordsonasymtek.com)

**North America Headquarters**  
2747 Loker Avenue West  
Carlsbad, CA 92010-6603, USA  
+1.760.431.1919

2020-10-19