

smartProLog
the professional logistics concept by smartTec

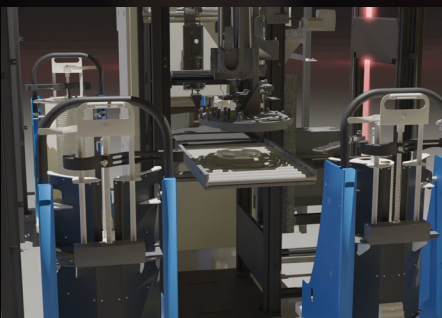
5 times Correct

The correct material - in the correct quantity - at the correct time - in the correct place is the basis for a trouble-free production process. Not least when using MSL components, correct, complete traceability of the stored and installed components is also essential.

From goods receipt to storage, control and tracking of the components, special attention was paid to the following points during the development and implementation of the award-winning concept:

- Modularity in software and hardware
- Flexibility and scalability
- Robustness and avoidance of potential faults
- Automation capability from manual to full automation
- Possible storage of all parts relevant to electronics production

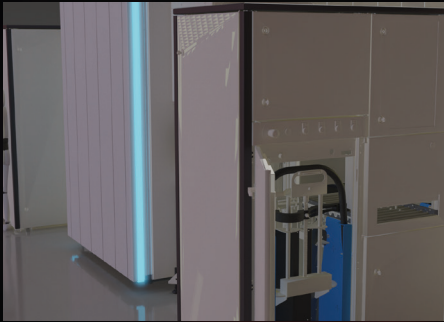
smartInScan (Incoming Goods)



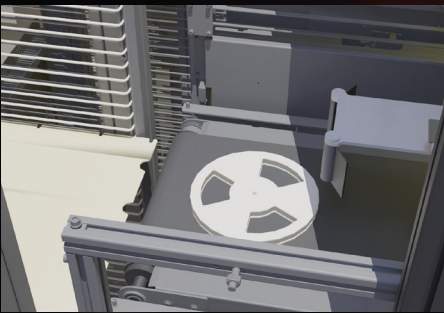
- From the semi-automatic table-top system
- To the fully automated high-volume version
- Autofocus camera
- Height sensor
- Detection of roll thickness
- Automatic scan
- Recording of barcode and plain text information
- Complete documentation and evaluation
- Stocktaking for the storage system **smartSCab**
- Goods receipt posting in the ERP system
- With full automation, the rolls are automatically loaded, scanned, booked in the ERP system, labelled with a unique ID, counted and loaded onto a picket trolley.
- The entire incoming goods process for component reels can also be fully automated at the **smartSCab** storage cabinet.

smartSCab (Automated Storage System)

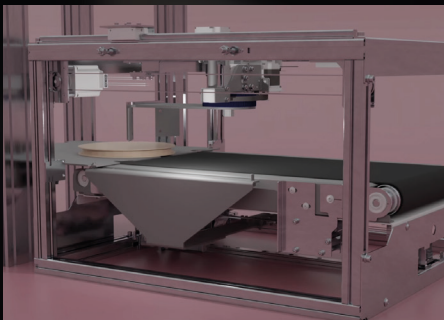
Large storage capacity with a small footprint and extremely low pick rates



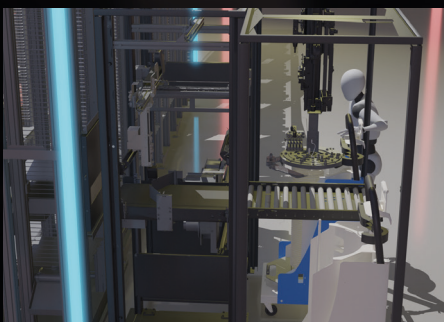
- Storage of rolls, bars, trays, snippets, printed circuit boards, cooled solder pastes and ...
- Storage and control of MSL components
- From the semi-automatic system...
- To the fully automated high-volume version with automatic component counter
- Automatic infeed scan with recording of the roll thickness



- No pneumatics in the entire storage cabinet
- Modular design in software and hardware
- Simple subsequent scaling thanks to modular expansion
- Self-configuring
- Self-optimising
- Automatic inventory function for roll goods using inline component counter



- Robust multifunctional deliverer (gripper)
- Free from pneumatics
- Removes and loads individual rolls
- Removes and loads entire packs
- Works in two directions
- Route and time optimisation when using fastlanes



- Maximum flexibility thanks to modular expandability with automation modules
- **PikeTrolleys** for holding up to 60 rolls
- **smartLoad** and **smartUnLoad** (loading and unloading) can accommodate
- **smartInScan** – camera (autofocus, height sensor and AI for automatic label placement)
- Automatic component counter



Correct Material



Correct Quantity



Correct Time



Correct Place



Correct Traceability

Contact form



Call now
+49 6106 6670-0



Write to us
info@smarttec.de



Visit us
Senefelder Str. 2
63110 Rodgau